

FEC Conzelmann Community Center Building Information & Layouts



Size and Capacity

Hall Size:

52 x 56 feet

Hall Stage Width: 27 feet and 7 inches

Capacity Dining : 196

Capacity Assembly: 200

Boardroom Size:

19' x 30'

38 Capacity

Table Information

(20) 60" round tables

(25) 8' x 30" tables

(2) 6' by 30" rectangle tables

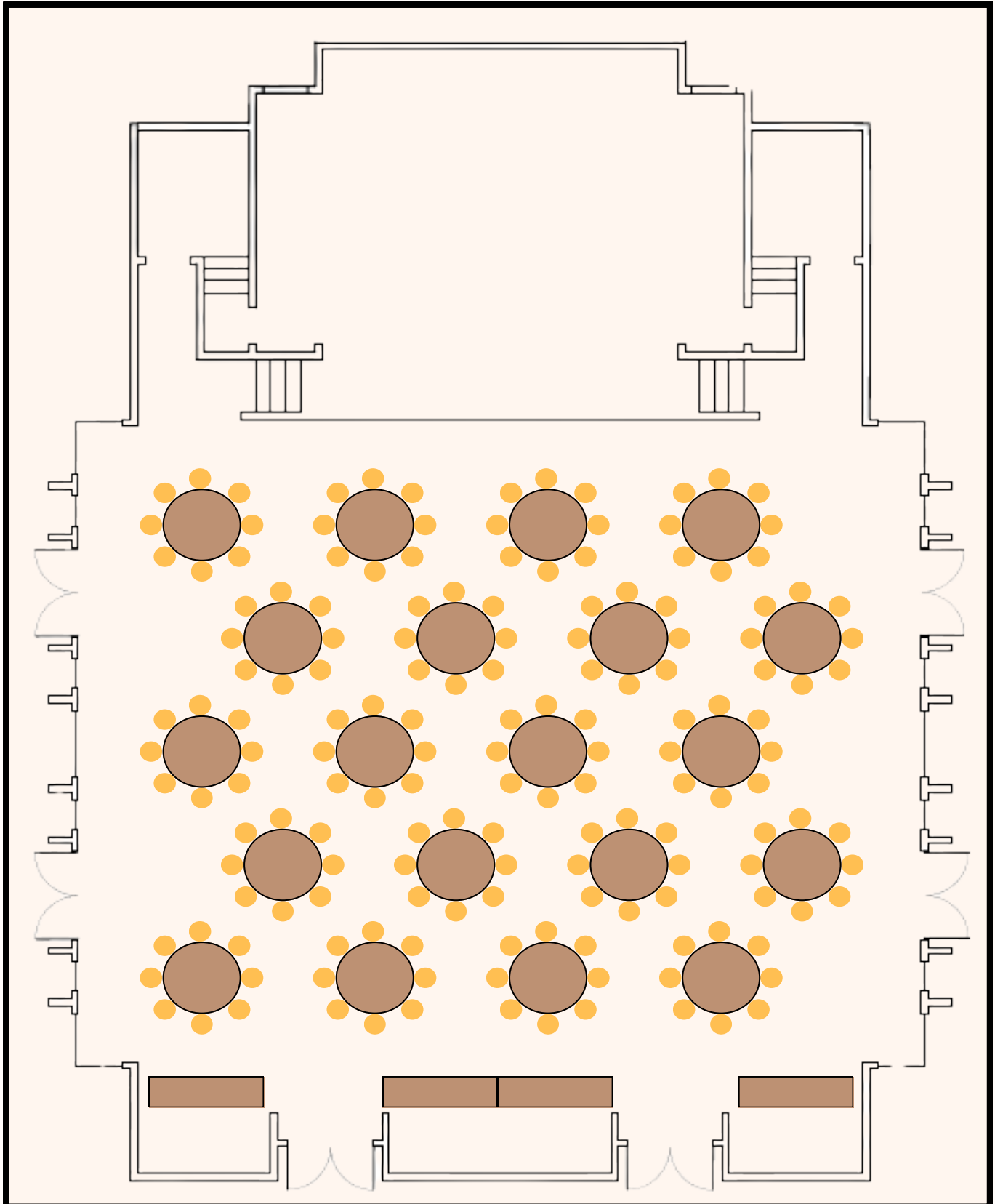
(14) 2' x 30" rectangle tables and (2) card table

AV Rentals:

Wireless and wired microphones, projector & screen, stage lighting

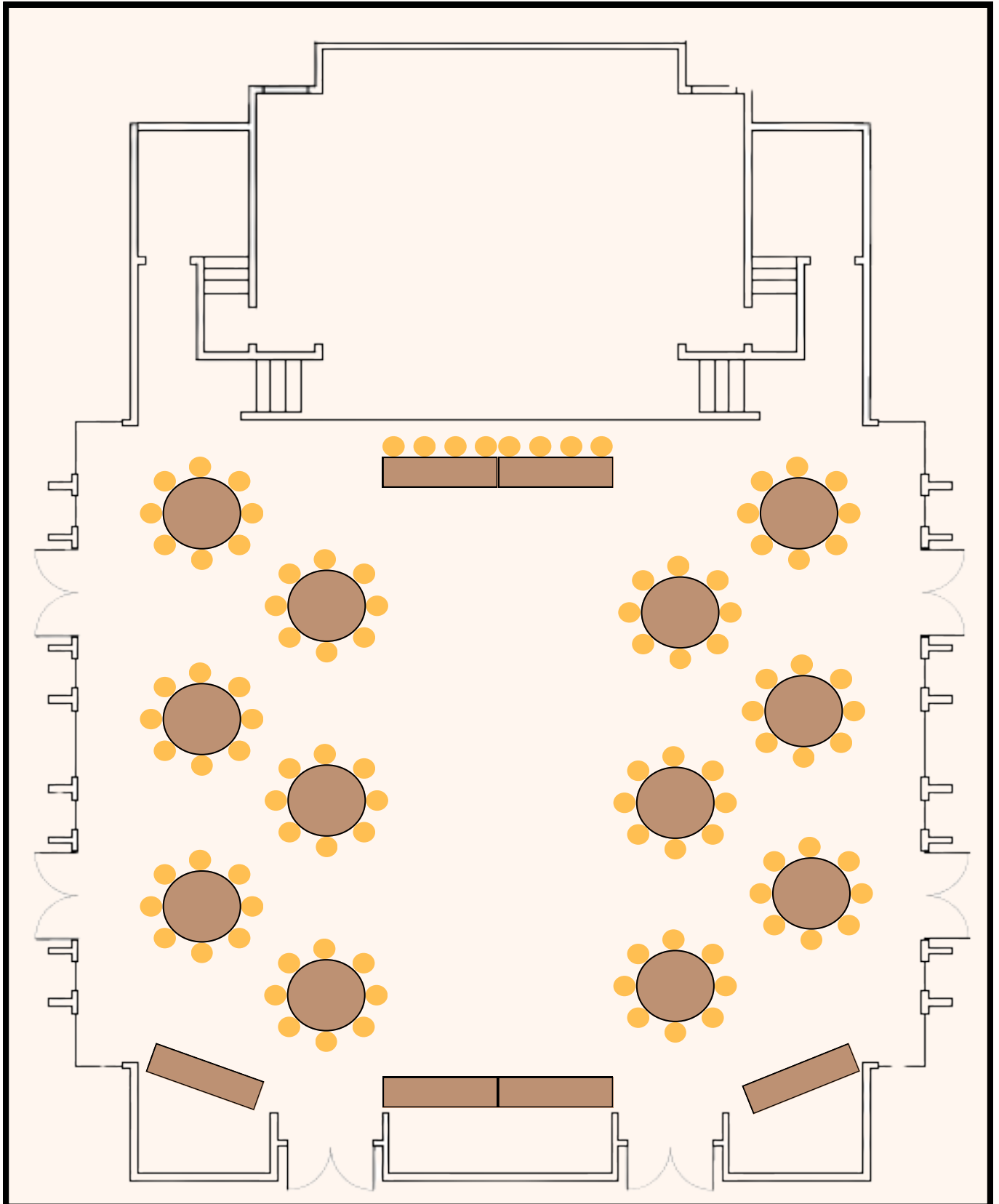
Dining Event Sample Layout

(Max Capacity 196)



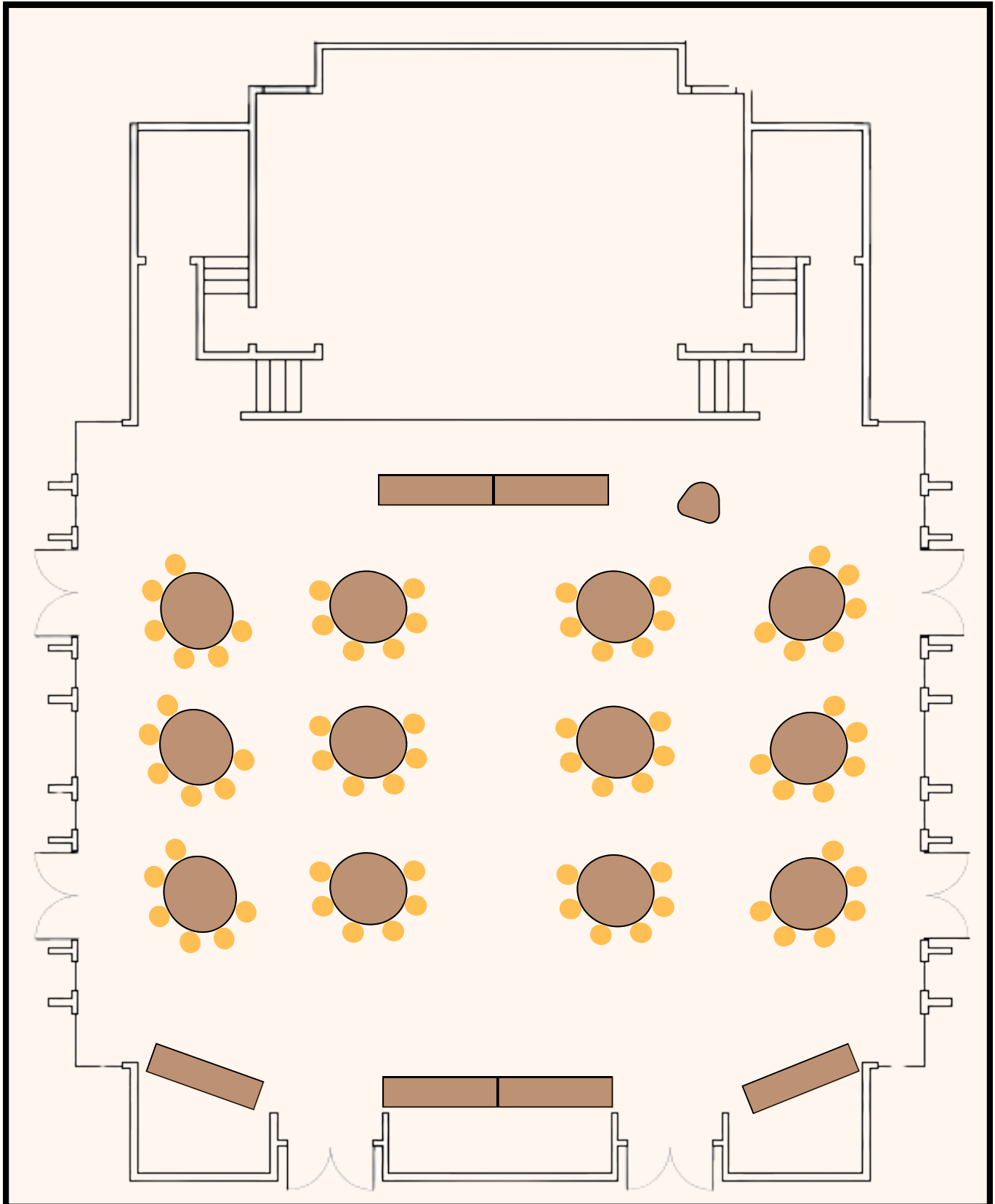
Dining Event Sample Layout

(Max Capacity 196)



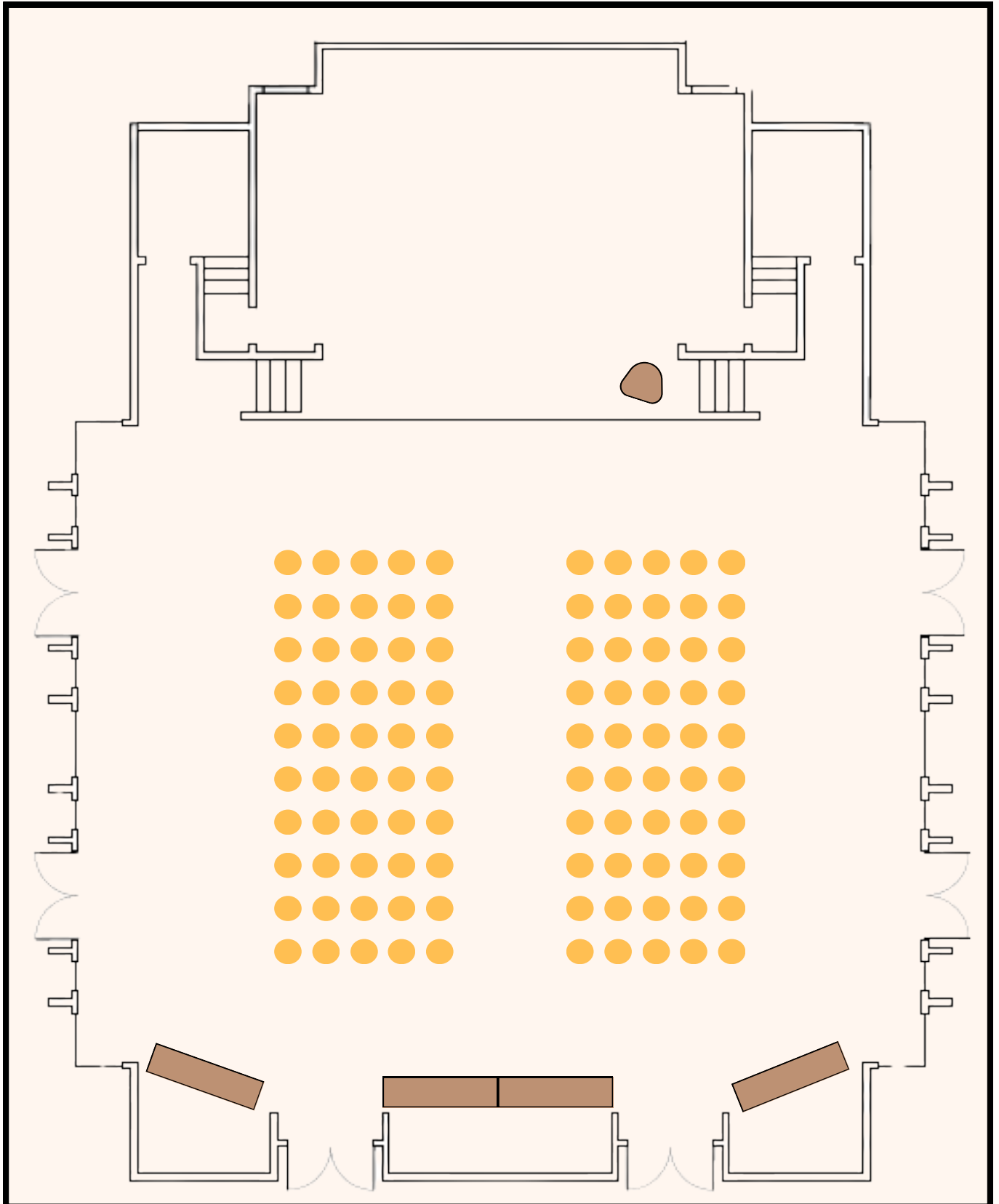
Conference Event Sample Layout

(Max Capacity 196)



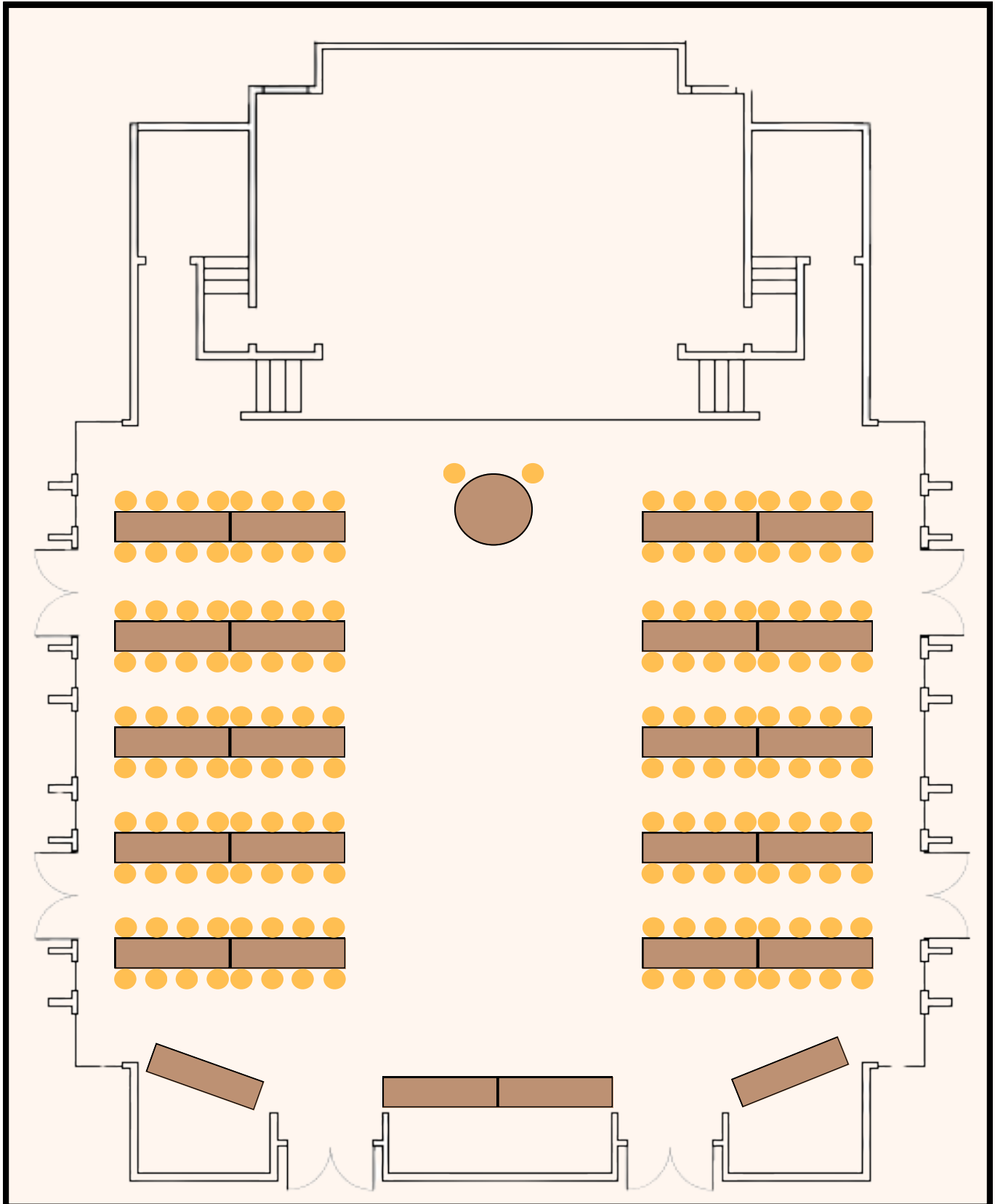
Theater/Assembly Event Sample Layout

(Max Capacity 200)



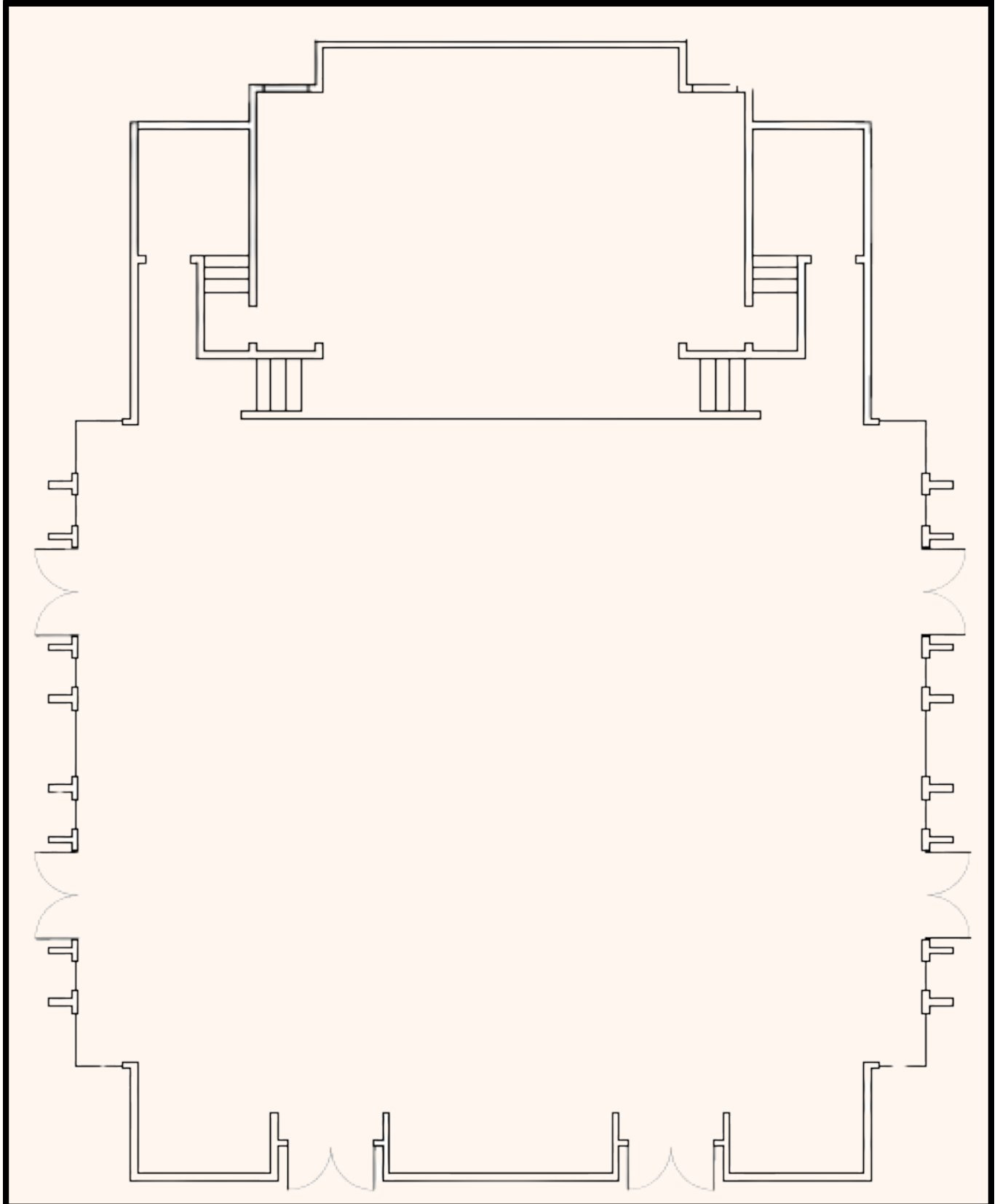
Dining Event Sample Layout

(Max Capacity 196)



Blank Layout

(Max Capacity 196-200)



FEC Boardroom Sample Layouts

(Max Capacity 38)

